

SI 582 Scenarios and Storyboards

Jane Mengtian Zhang

Unique name: janezmt

Scenario 1: Identifying Species

Akira, a 1st year international Master of Public Policy student at University of Michigan, is heading towards the project room to conduct a client interview. The late autumn morning air is fresh and crisp, and the grasses are still fresh from the rain last night, yet she has no time to stop and appreciate this pleasant scenery. Suddenly, a shade of light greenish color catches her eyes; a mysterious plant growing near the lecture building, with its light green flowers clustering into a mysterious round shape. Akira is amazed by this strange and beautiful plant. She wonders what the plant is called, and if it's related to another ball-shaped flower in her hometown.

Still walking, Akira takes out her phone and opens the local biodiversity app she recently downloaded by recommendation of her Michigan friends. She taps "Identify Species", "Plants" and continues walking into the destination building, while the app automatically gets her location info and starts generating a list of plants nearby. When she finally sits down in her project room, she looks at her phone again and recognizes the photo of the plant in the top three listed items. Clicking inside the item she sees a brief description of the plant, links to wikipedia and google images, as well as a list of related plants, including the familiar plant she saw a lot in her hometown. Happily, she bookmarks the plant to read it later, and fully focus herself on preparation for the interview.

Scenario 2: Sharing Experience

Gin, a UMich undergraduate student with a strong interest in photography, is walking through the campus lawn after the whole day's class. When passing by a huge oak tree, he notices several squirrels are gathering around the tree. Only one squirrel is on the trunk in an aggressive gesture, while others are on the ground looking at it. Gin wildly guessed that the squirrel on the trunk maybe the leader of the squirrel party. Feeling amazed, he takes a photo of the squirrels and posts them onto Facebook tagged with "squirrel".

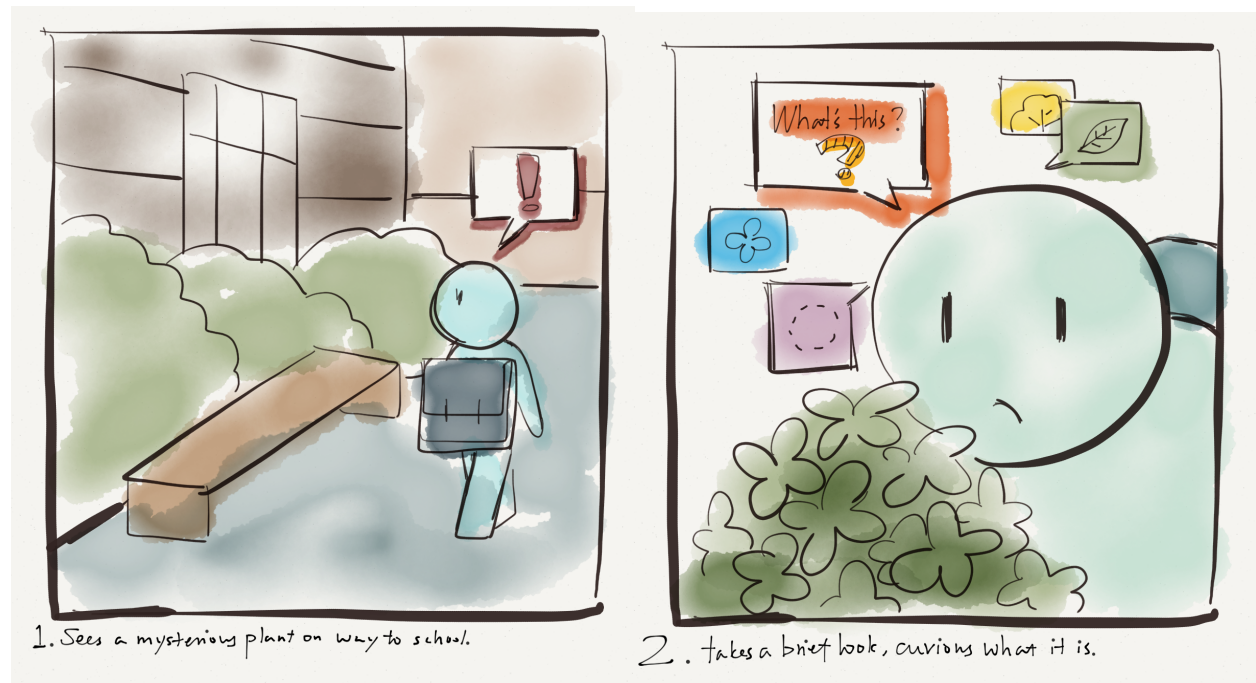
The next day, Gin opens his local biodiversity app to check recent status. To his delight, the app automatically retrieves his Facebook feed of the squirrel and marks it on a map, together with a dozen squirrel photos in nearby locations taken by other users. Several local animal lovers offered some serious comments on the squirrel behavior, which Gin finds very interesting. Tapping on the squirrel tag, Gin directly goes into the species page and starts browsing through information about this adorable local species.

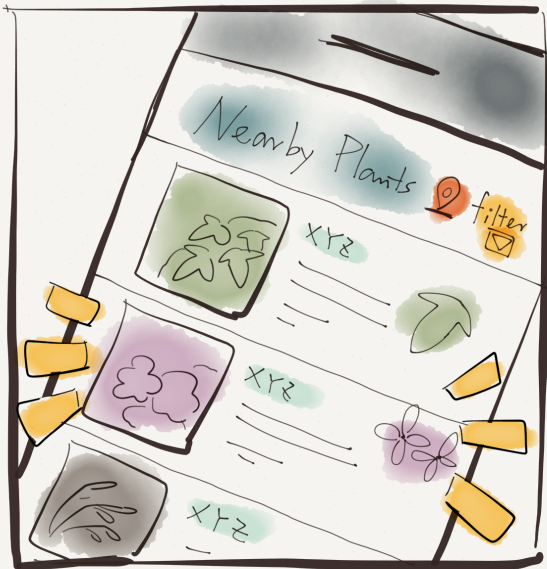
Scenario 3: Field Discovery

Clara is a high school student living in Ann Arbor, Michigan. She has recently fallen in love with a movie, in which a romantic story took place surrounding a sycamore tree. Having never really seen a real sycamore tree, Clara desires to see the tree with her own eyes, yet she has no idea if the tree exists in her neighborhood, let alone the specific location to find one.

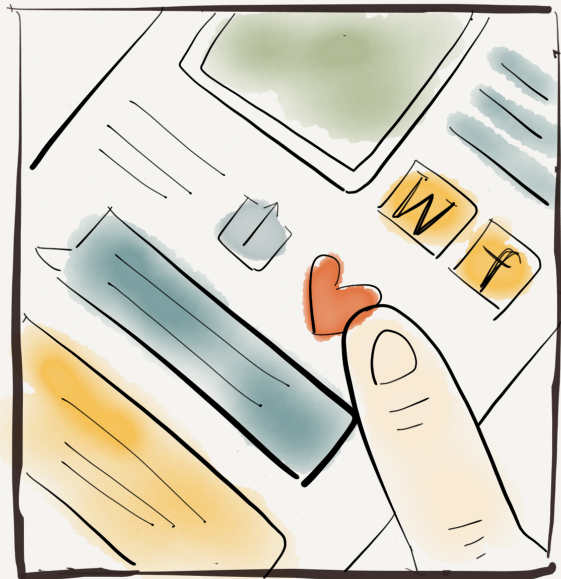
With a slight ray of hope, Clara opens the local biodiversity app and enters the page for sycamore tree. She taps on the “Find this species” button, and the app returns a map marked with recent discoveries of the tree, as well as sequential guidances to identify the tree in local context, including tree outline, shape of leaves, color in this season, etc. Much delighted, Clara finds a recent discovery event in Virginia Park, which is only half an hour away from her place. She also learns that the tree may have turned deep red in this late autumn, and that both its leaves and fruits are peculiarly shaped and could be easily identified. With all these information in hand, Clara feels even more motivated to go to find the tree. She cannot wait to see the magnificence of the tree this weekend.

Storyboards

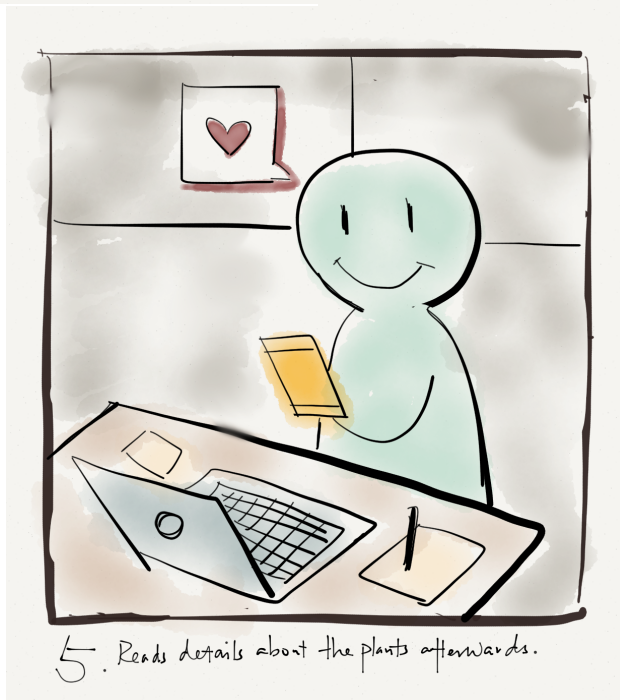




3. Enters app. browses nearby plant species.



4. Bookmarks the plant entry for later reference.



5. Reads details about the plants afterwards.